

The Google Earth™ Publishing Extension for AutoCAD 2008 Products

READ THIS FIRST

(Disclaimer: Remember that this is an early look at beta software; really cool technology, but it's unsupported, use at your own risk, etc. In other words, don't use these tools on mission critical projects! Lastly, we make no guarantee that these products/features will ever be commercially available.)

Applicable Products

- AutoCAD 2008
- AutoCAD Architectural 2008
- AutoCAD Civil 3D 2008
- AutoCAD Map 3D 2008

Installation Instructions

You must have administrative privileges on your Microsoft® Windows® operating system to complete the installation process. It is strongly recommended that you exit all Windows programs before you start.

To install this product

1. Download the ZIP file to any temporary location.
2. Double-click the ZIP file to open, then double-click SETUP.EXE and follow the instructions to install this product.
3. You will need to pick the AutoCAD product directory where you want the tools installed, e.g. C:\Program Files\AutoCAD 2008
4. Note: If you have more than one applicable Autodesk product where you want this installed, you will have to repeat this procedure and install this set of tools to each product directory.
5. Online Help (*AeccDWGToGE.chm*) is located in the Help folder under the AutoCAD product folder; e.g. C:\Program Files\AutoCAD 2008\Help – double click this in order to open and view the contents.

Enabling the Google Earth Toolbar in AutoCAD

THE GOOGLE EARTH™ PUBLISHING EXTENSION FOR AUTOCAD 2008 PRODUCTS

1. At the AutoCAD command line, type CUILOAD, the following dialog will appear:

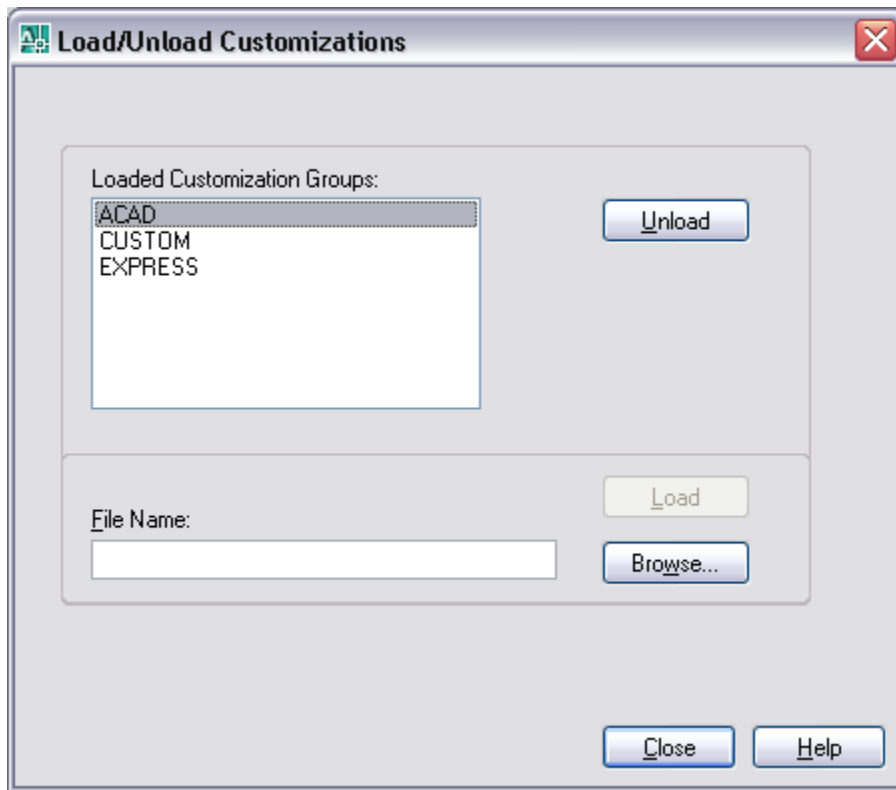


Figure 1: Loading the Google Earth menu

2. Browse to the location where you installed these tools, e.g. C:\Program Files\AutoCAD 2008
3. Select the file called "GoogleEarth.cui"
4. Click LOAD, then dismiss this dialog

The following toolbar will now be displayed on screen:

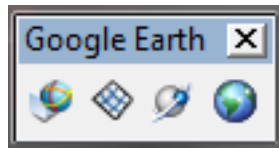


Figure 2: Google Earth Toolbar in AutoCAD

Command Reference

Command Name	Description
IMPORTGEIMAGE	Brings current Google Earth view into AutoCAD as raster image. Use this command to georeference your DWG model data to correct position on earth's surface.
IMPORTGEMESH	Brings elevation data in current Google Earth view into AutoCAD as a mesh.
PUBLISHKML	Exports your 3D DWG model space entities to an external file for use within Google Earth.
GETIME	Attaches time span information to AutoCAD entities which will be honored by the time tool available in Google Earth.

What files are installed with this Extension?

AeccDWGToGE.arx - the main AutoCAD run-time extension add-on module

AeccDWGToGEEnu.dll - the Windows DLL module containing all localizable text strings and dialog boxes used by *AeccDWGToGE.arx*

AeccDWGToGE.chm - a help file describing in detail how to use the Publish DWG to Google Earth application

GoogleEarth.cui - a partial AutoCAD customization file containing a four-button toolbar allowing easy access to the four commands available with this add-on.

Readme_PublishDwgToGE.rtf - This readme file.



Autodesk [and other products] are either registered trademarks or trademarks of Autodesk, Inc., in the USA and/or other countries. All other brand names, product names, or trademarks belong to their respective holders. Autodesk reserves the right to alter product offerings and specifications at any time without notice, and is not responsible for typographical or graphical errors that may appear in this document.

© 2007 Autodesk, Inc. All rights reserved.